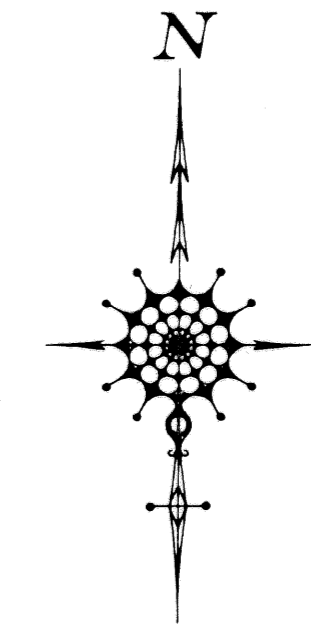


FIRE STATION NO. 52

BEING A REPLAT OF A PORTION OF TRACT "G",
BOCAIRE GOLF CLUB No. 3 (A PART OF PALM AIRE WEST P.R.D.) AS RECORDED
IN PLAT BOOK 49, PAGE 151 OF THE PUBLIC RECORDS OF PALM BEACH COUNTY, FLORIDA, AND
A PORTION OF SECTION 36, TOWNSHIP 46 SOUTH, RANGE 42 EAST, PALM BEACH COUNTY, FLORIDA



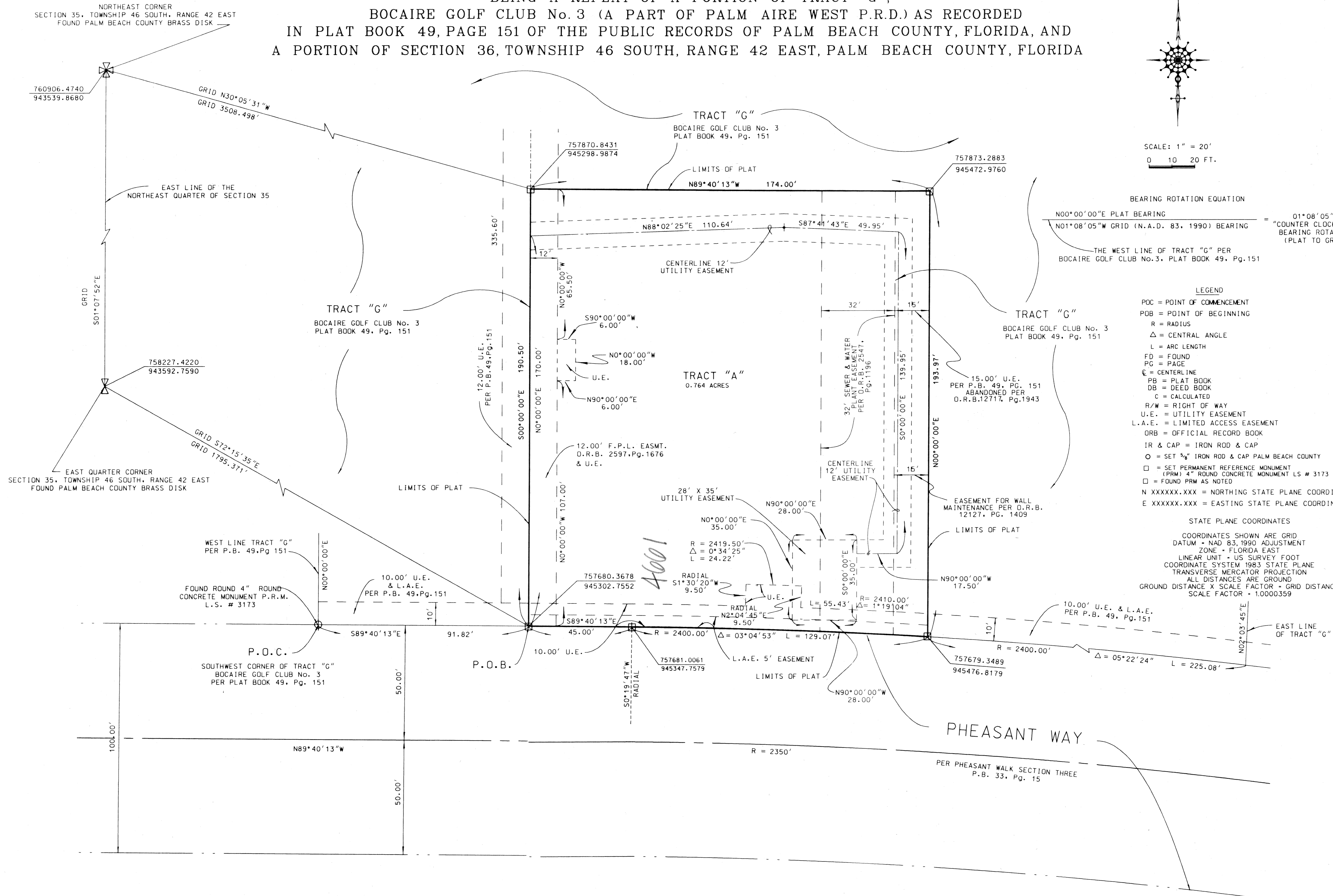
SCALE: 1" = 20'
0 10 20 FT.

BEARING ROTATION EQUATION
$$\frac{N00^{\circ}00'00''E \text{ PLAT BEARING}}{N01^{\circ}08'05''W \text{ GRID (N.A.D. 83, 1990) BEARING}} = \frac{01^{\circ}08'05''}{\text{"COUNTER CLOCKWISE" BEARING ROTATION (PLAT TO GRID)}}$$

THE WEST LINE OF TRACT "G" PER BOCAIRE GOLF CLUB No. 3, PLAT BOOK 49, Pg. 151

LEGEND
POC = POINT OF COMMENCEMENT
POB = POINT OF BEGINNING
R = RADIUS
 Δ = CENTRAL ANGLE
L = ARC LENGTH
FD = FOUND
PG = PAGE
C = CENTERLINE
PB = PLAT BOOK
DB = DEED BOOK
C = CALCULATED
R/W = RIGHT OF WAY
U.E. = UTILITY EASEMENT
L.A.E. = LIMITED ACCESS EASEMENT
ORB = OFFICIAL RECORD BOOK
IR & CAP = IRON ROD & CAP
 \square = SET $\frac{3}{8}$ " IRON ROD & CAP PALM BEACH COUNTY
 \square = SET PERMANENT REFERENCE MONUMENT (PRM) 4" ROUND CONCRETE MONUMENT LS # 3173
 \square = FOUND PRM AS NOTED
N XXXXXX.XXX = NORTHING STATE PLANE COORDINATE
E XXXXXX.XXX = EASTING STATE PLANE COORDINATE

STATE PLANE COORDINATES
COORDINATES SHOWN ARE GRID
DATUM - NAD 83, 1990 ADJUSTMENT
ZONE - FLORIDA EAST
LINEAR UNIT - US SURVEY FOOT
COORDINATE SYSTEM 1983 STATE PLANE
TRANSVERSE MERCATOR PROJECTION
ALL DISTANCES ARE GROUND
GROUND DISTANCE X SCALE FACTOR = GRID DISTANCE
SCALE FACTOR = 1.0000359



PALM BEACH COUNTY
ENGINEERING AND PUBLIC WORKS
ENGINEERING SERVICES
160 AUSTRALIAN AVENUE
WEST PALM BEACH, FL 33406

SCALE: 1" = 20'
APPROVED: G.W.M.
DRAWN: A.B.F.
CHECKED: W.C.E.
DATE: 03/27/2000

FIRE STATION NO. 52
DRAWING NO. S-3-00-1432

SHEET: 2
OF: 2
PROJECT NO. 2000014-002

SUBDIVISION FIRE STATION No. 52
BOOK 03
PAGE 03
FLOOD ZONE B
ZONING PO
SE 88-58(A)
TAZ 592
PUD NAME